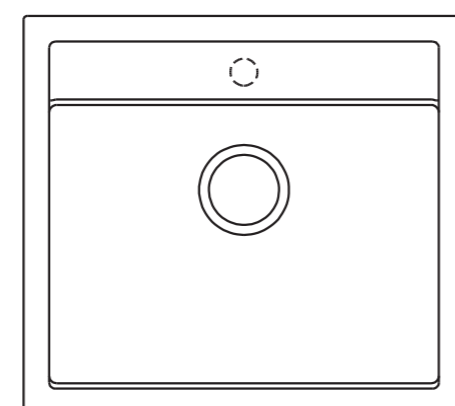
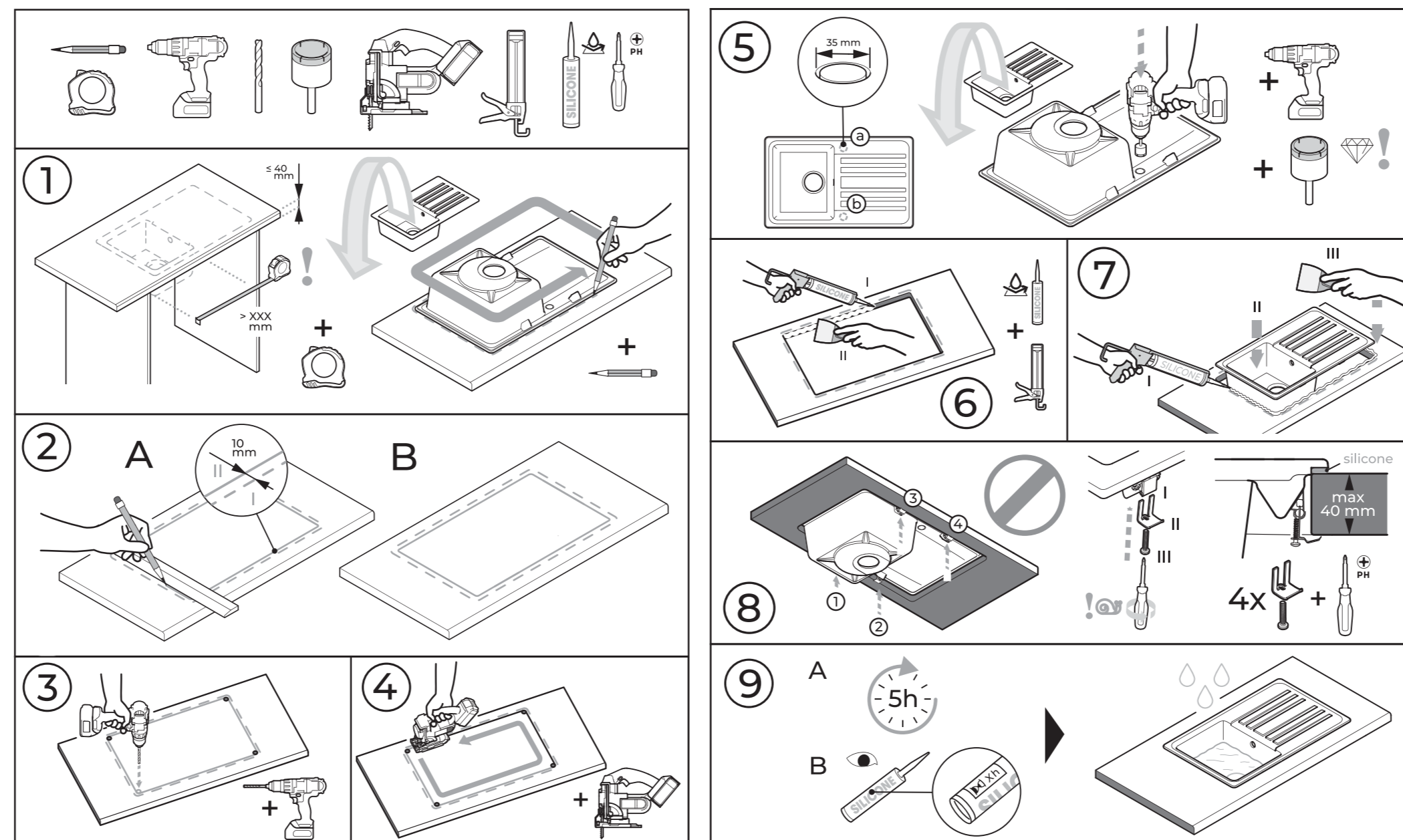


# SQQ100

## CUT-OUT TEMPLATE

### TOPMOUNT

## INSTALLATION INSTRUCTIONS



#### NOTICE

The template associated with this sink are for reference only.

You must have the sink and all sink accessories on site prior to any cutting or modifications to the countertop to ensure a correct fit and proper installation.

It is the responsibility of the installer to check and confirm all layout details and measurements prior to installation.

**THE MANUFACTURER/DISTRIBUTOR WILL NOT BE RESPONSIBLE OR LIABLE FOR ANY ERRORS WHEN USING THE TEMPLATE.**

490 mm (+/-0.5%)

545 mm (+/-0.5%)



[www.youtube.com/@Helika\\_sinks](https://www.youtube.com/@Helika_sinks)